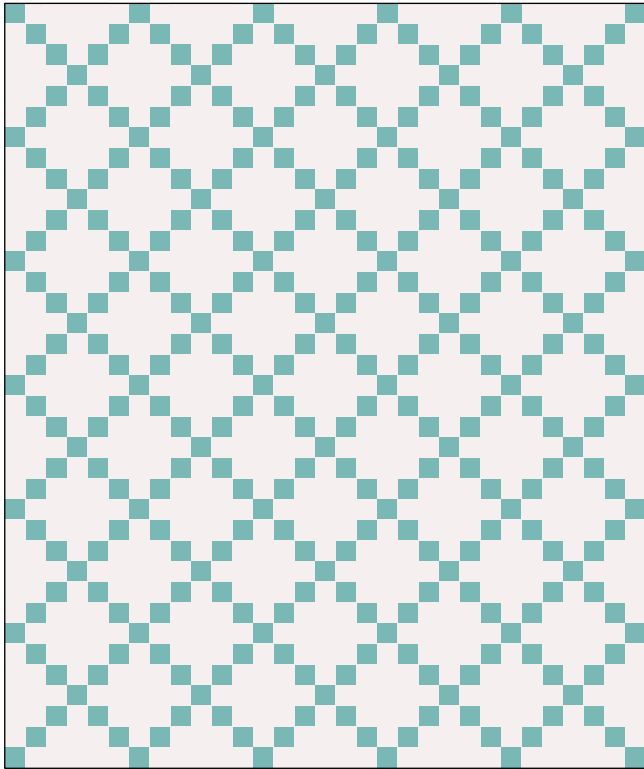


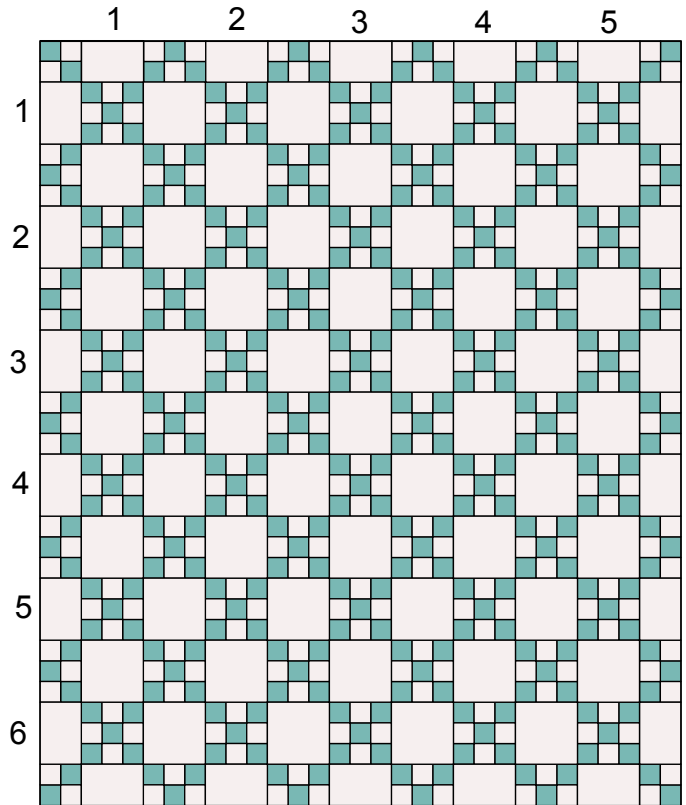
# Single Irish Chain

## 2 Color Version

### The General Pattern:



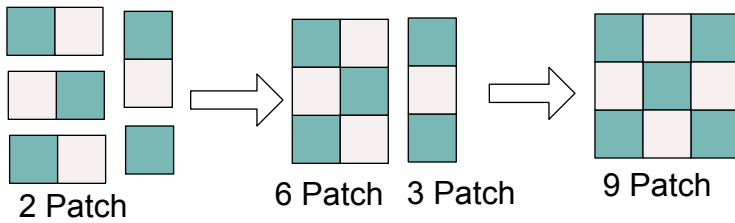
Sample size: 5 nine patches x 6 nine patches



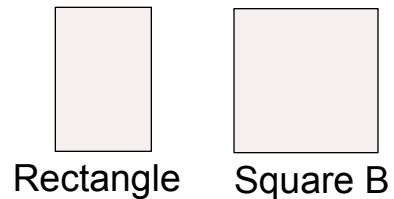
### Assembly:

The Fabrics: 2 fabrics, one light, one dark.

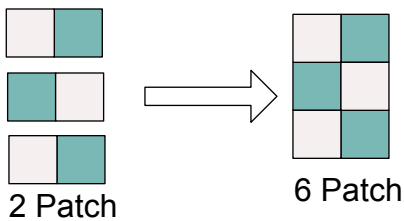
### The Main Unit:



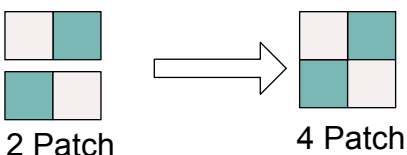
### Background Shapes:



### Edge Unit:



### Corner Unit:

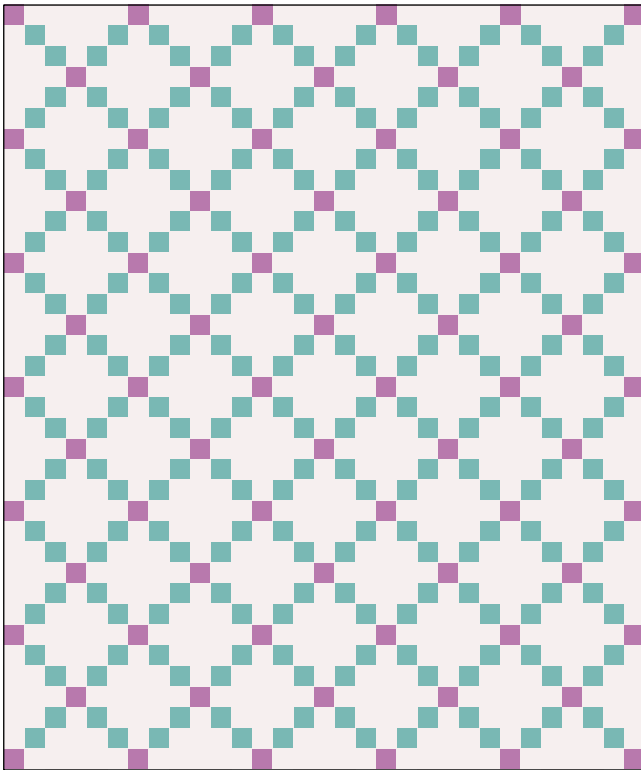


<u>Scale</u>	<u>SQ A</u>	<u>2SQ A</u>	<u>RECT</u>	<u>SQ B</u>	<u>9 Patch Units</u>
<b>A</b>	1"	1"	2" x 3"	3"	3"
<b>B</b>	1.5"	1.5"	3" x 4.5"	4.5"	4.5"
<b>C</b>	2"	2"	4" x 6"	6"	6"
<b>D</b>	2.5"	2.5"	5" x 7.5"	7.5"	7.5"
<b>E</b>	3"	3"	6" x 9"	9"	9"

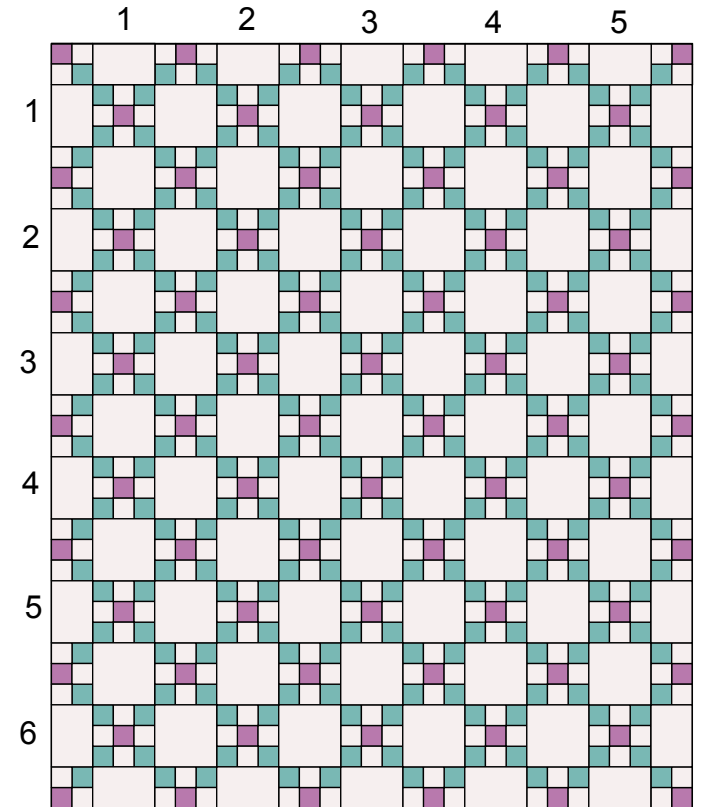
# Single Irish Chain

## 3 Color Version

### The General Pattern:



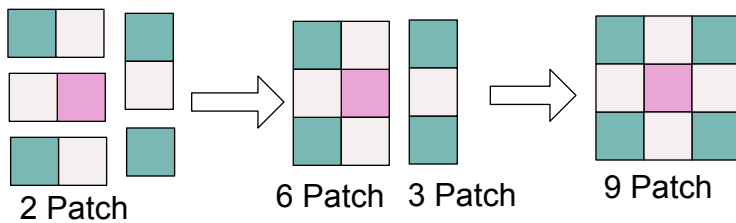
Sample size: 5 nine patches x 6 nine patches



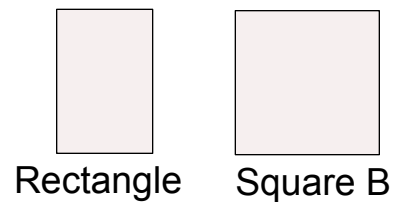
### Assembly:

The Fabrics: a predominate color, an accent color, and a background color.

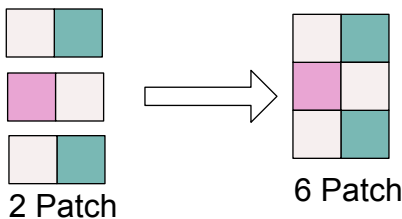
#### The Main Unit:



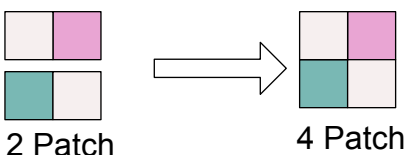
#### Background Shapes:



#### Edge Unit:



#### Corner Unit:

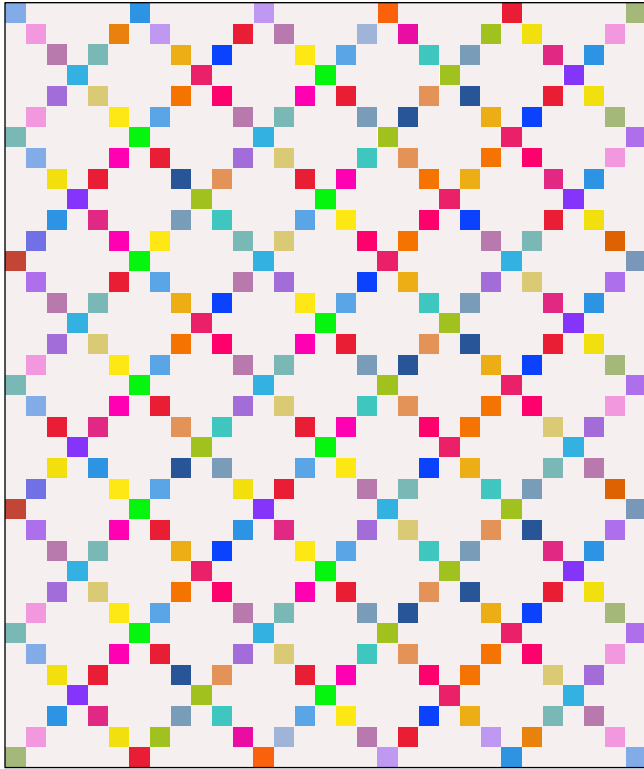


Scale	SQ A	2SQ A	RECT	SQ B	9 Patch Units
A	1"	1"	2" x 3"	3"	3"
B	1.5"	1.5"	3" x 4.5"	4.5"	4.5"
C	2"	2"	4" x 6"	6"	6"
D	2.5"	2.5"	5" x 7.5"	7.5"	7.5"
E	3"	3"	6" x 9"	9"	9"

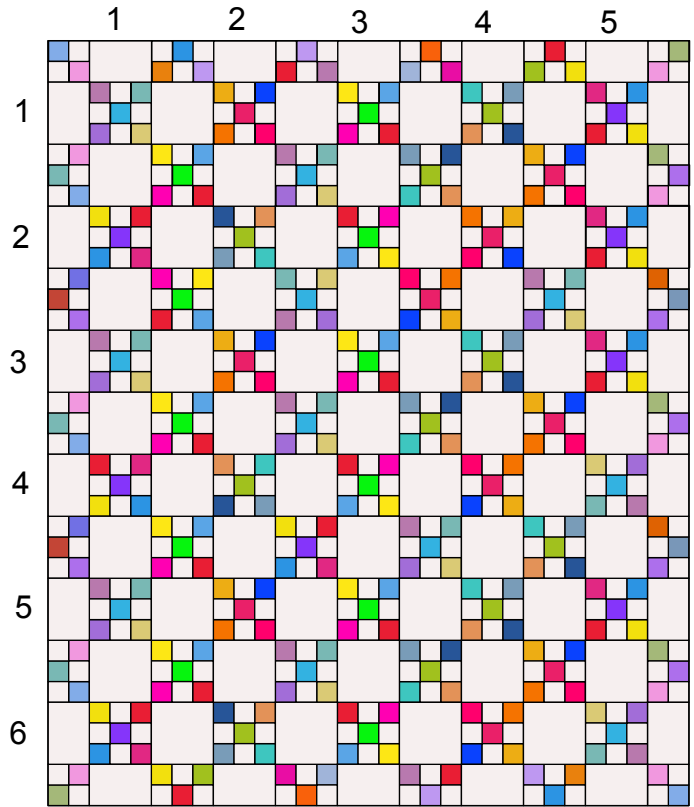
# Single Irish Chain

## Scrappy Version

### The General Pattern:



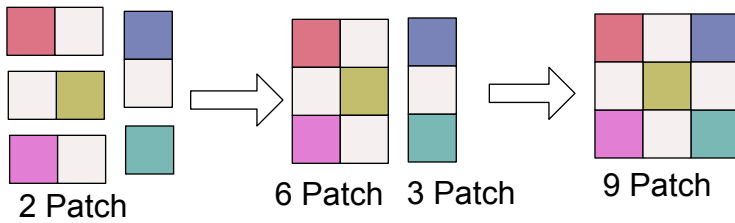
Sample size: 5 nine patches x 6 nine patches



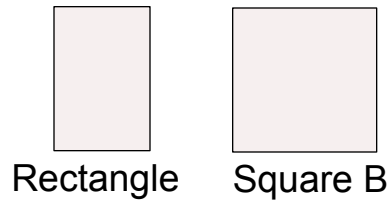
### Assembly:

The Fabrics: a collection of many fabrics plus a background fabric.

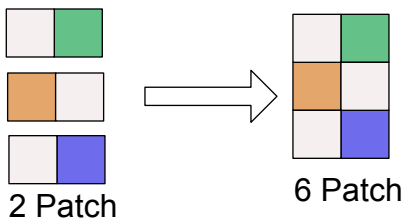
#### The Main Unit:



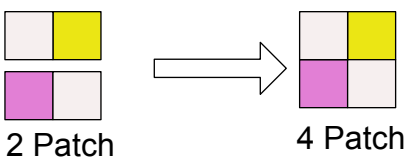
#### Background Shapes:



#### Edge Unit:



#### Corner Unit:



Scale	SQ A	2SQ A	RECT	SQ B	9 Patch Units
A	1"	1"	2" x 3"	3"	3"
B	1.5"	1.5"	3" x 4.5"	4.5"	4.5"
C	2"	2"	4" x 6"	6"	6"
D	2.5"	2.5"	5" x 7.5"	7.5"	7.5"
E	3"	3"	6" x 9"	9"	9"

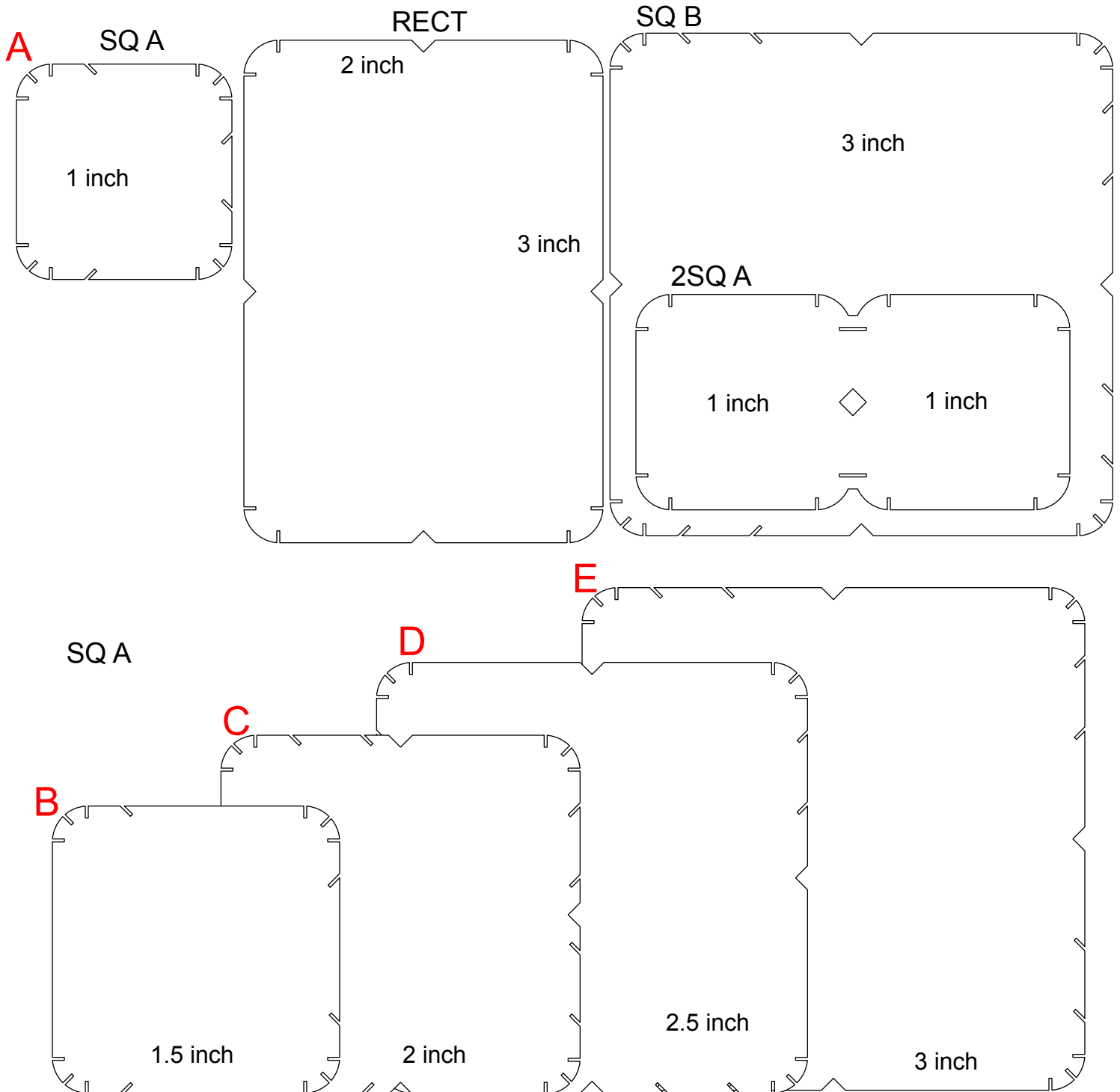
# Single Irish Chain

## Scale Options

<u>Scale</u>	<u>SQA</u>	<u>2SQA</u>	<u>RECT</u>	<u>SQ B</u>	<u>9 Patch Units</u>
A	1"	1"	2" x 3"	3"	3"
B	1.5"	1.5"	3" x 4.5"	4.5"	4.5"
C	2"	2"	4" x 6"	6"	6"
D	2.5"	2.5"	5" x 7.5"	7.5"	7.5"
E	3"	3"	6" x 9"	9"	9"

Shapes are True to Size

**Set Printer Scale to 100% to get an accurate representation of the shapes.**



# Single Irish Chain

## Quilt Dimensions and Scale

### Width

			Number of Nine Patch Units Across														
Scale	SQA	9 Patch	3	4	5	6	7	8	9	10	11	12	13	14	15	16	17
A	1	3	19.0	25.0	31.0	37.0	43.0	49.0	55.0	61.0	67.0	73.0	79.0	85.0	91.0	97.0	103.0
B	1.5	4.5	28.5	37.5	46.5	55.5	64.5	73.5	82.5	91.5	100.5	109.5	118.5				
C	2	6	38.0	50.0	62.0	74.0	86.0	98.0	110.0								
D	2.5	7.5	47.5	62.5	77.5	92.5	107.5										
E	3	9	57.0	75.0	93.0	111.0											

### Length

			Number of Nine Patch Units Down														
Scale	SQA	9 Patch	3	4	5	6	7	8	9	10	11	12	13	14	15	16	17
A	1	3	19.0	25.0	31.0	37.0	43.0	49.0	55.0	61.0	67.0	73.0	79.0	85.0	91.0	97.0	103.0
B	1.5	4.5	28.5	37.5	46.5	55.5	64.5	73.5	82.5	91.5	100.5	109.5	118.5				
C	2	6	38.0	50.0	62.0	74.0	86.0	98.0	110.0								
D	2.5	7.5	47.5	62.5	77.5	92.5	107.5										
E	3	9	57.0	75.0	93.0	111.0											


## Total Number of Nine Patch Units

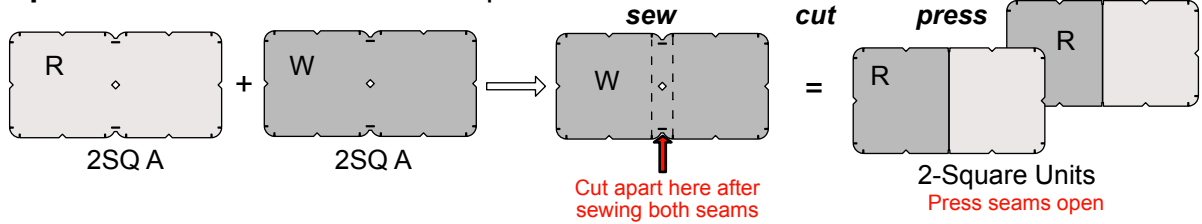
Units Down	Units Across																
	3	4	5	6	7	8	9	10	11	12	13	14	15	16	17		
3	13	18	23	28	33	38	43	48	53	58	63	68	73	78	83		
4	18	25	32	39	46	53	60	67	74	81	88	95	102	109	116		
5	23	32	41	50	59	68	77	86	95	104	113	122	131	140	149		
6	28	39	50	61	72	83	94	105	116	127	138	149	160	171	182		
7	33	46	59	72	85	98	111	124	137	150	163	176	189	202	215		
8	38	53	68	83	98	113	128	143	158	173	188	203	218	233	248		
9	43	60	77	94	111	128	145	162	179	196	213	230	247	264	281		
10	48	67	86	105	124	143	162	181	200	219	238	257	276	295	314		
11	53	74	95	116	137	158	179	200	221	242	263	284	305	326	347		
12	58	81	104	127	150	173	196	219	242	265	288	311	334	357	380		
13	63	88	113	138	163	188	213	238	263	288	313	338	363	388	413		
14	68	95	122	149	176	203	230	257	284	311	338	365	392	419	446		
15	73	102	131	160	189	218	247	276	305	334	363	392	421	450	479		
16	78	109	140	171	202	233	264	295	326	357	388	419	450	481	512		
17	83	116	149	182	215	248	281	314	347	380	413	446	479	512	545		


# 2 Color Version

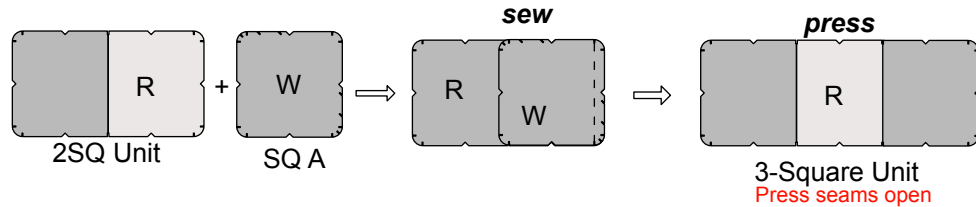
## Single Irish Chain


Use the repetitive units stated on the final estimate to determine how many units to make.

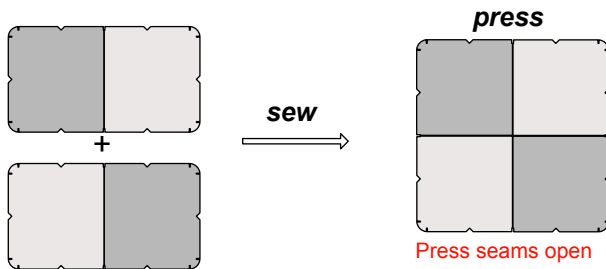
 **2-Square Units:** Sew all 2SQ A shapes into 2SQ units.




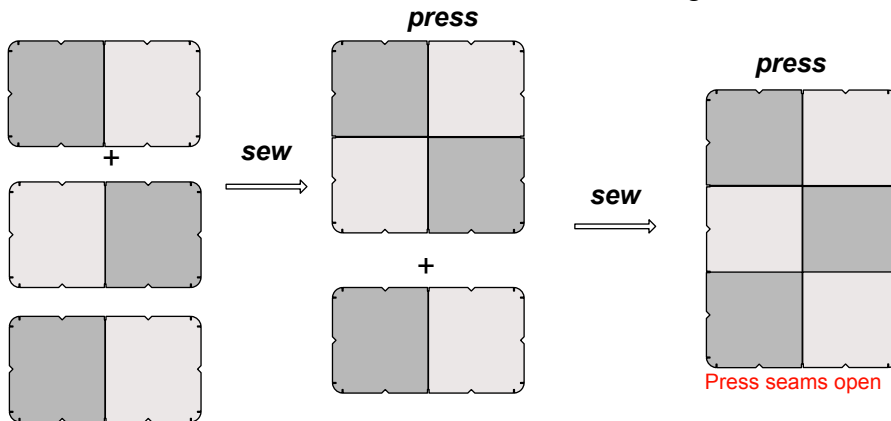
 **3-Square Units:** From the 2SQ units make 1 3SQ unit for every 9 patch unit needed.

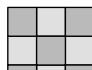


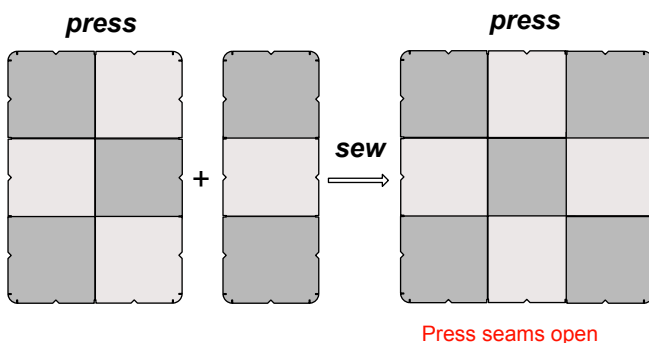
 **4-Square Units:** Use 8 2SQ units to make 4 4SQ units for the 4 corner units.



 **6-Square Units:** Make 6SQ units with all the remaining 2SQ units.



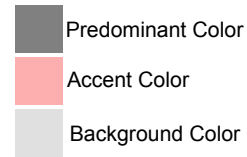
 **9-Square Units:** Combine the 3SQ units with the 6SQ units to make the 9 patch units.




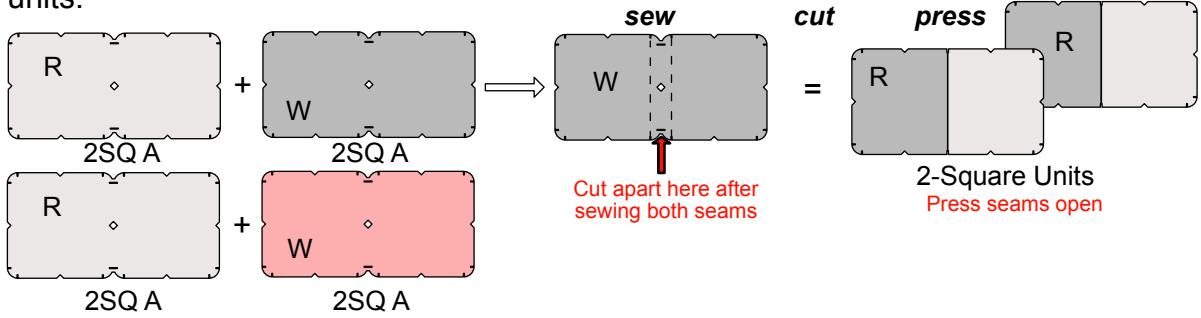
R = Right Side Up, W = Wrong Side Up


# 3 Color Version

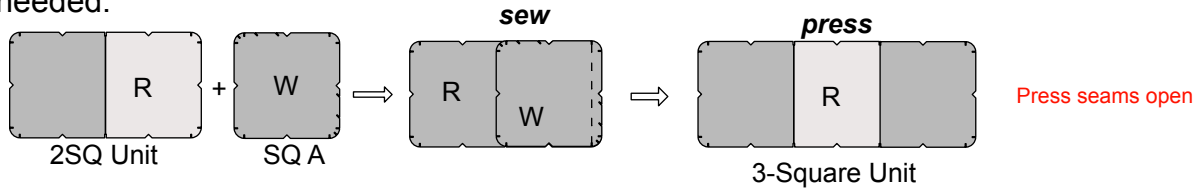
## Single Irish Chain




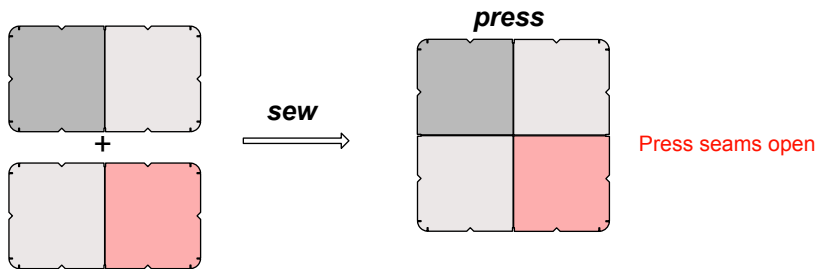
 **2-Square Units:** Combine all background 2SQ A shapes with the colored 2SQ A shapes to form 2SQ units.



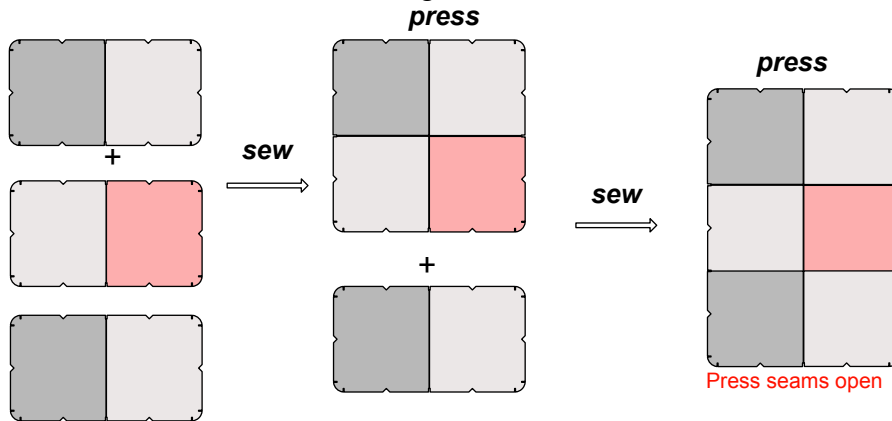
 **3-Square Units:** From the 2SQ units in the predominant color, make 1 3SQ unit for every 9 patch unit needed.




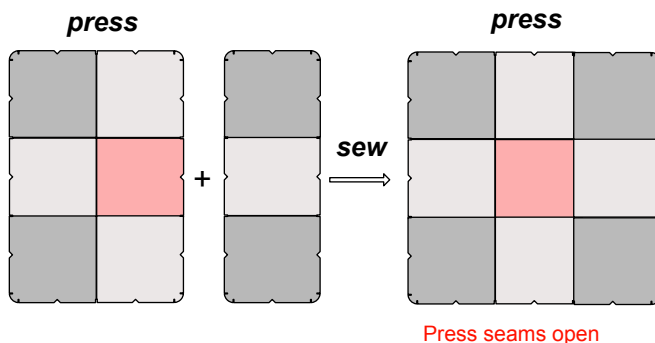
 **4-Square Units:** Combine a 2SQ unit of each color to make a 4SQ unit. Make 4 units.



 **6-Square Units:** Use the remaining 2SQ units to make 6SQ units.



 **9-Square Units:** Combine a 3SQ unit and a 6SQ unit to make all the 9 patch units. Make sure to orient the accent color in the middle.



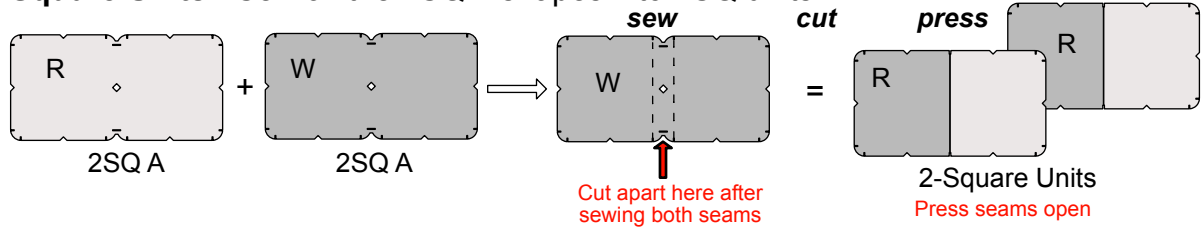
R = Right Side Up, W = Wrong Side Up

# Scrappy Version

## Single Irish Chain



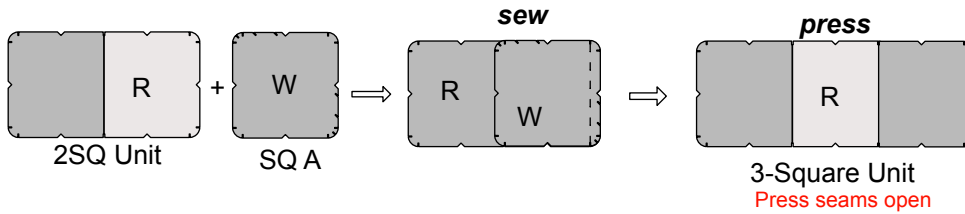
**2-Square Units:** Sew all the 2SQ A shapes into 2SQ units.



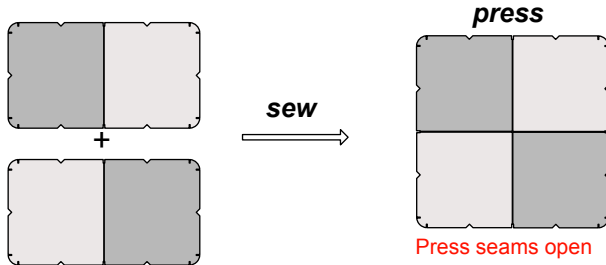
Randomly select different fabrics to combine and make 3-square, 4-square, 6-square, and 9-square units.



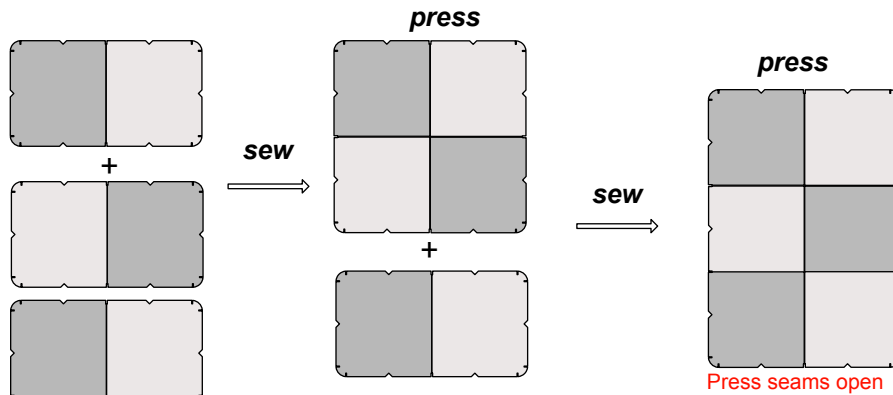
**3-Square Unit:** From the 2SQ units, make 1 3SQ unit for every 9 patch needed.



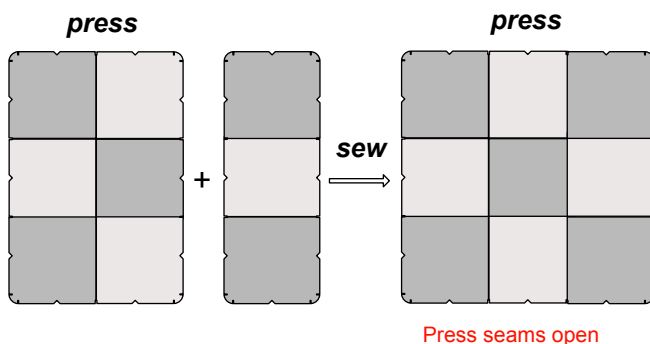
**4-Square Units:** Use 8 2SQ units to make 4 4SQ units.



**6-Square Units:** Make 6SQ units with all the remaining 2SQ units.



**9-Square Units** Combine the 3SQ units with the 6SQ units to make 9 patch units.

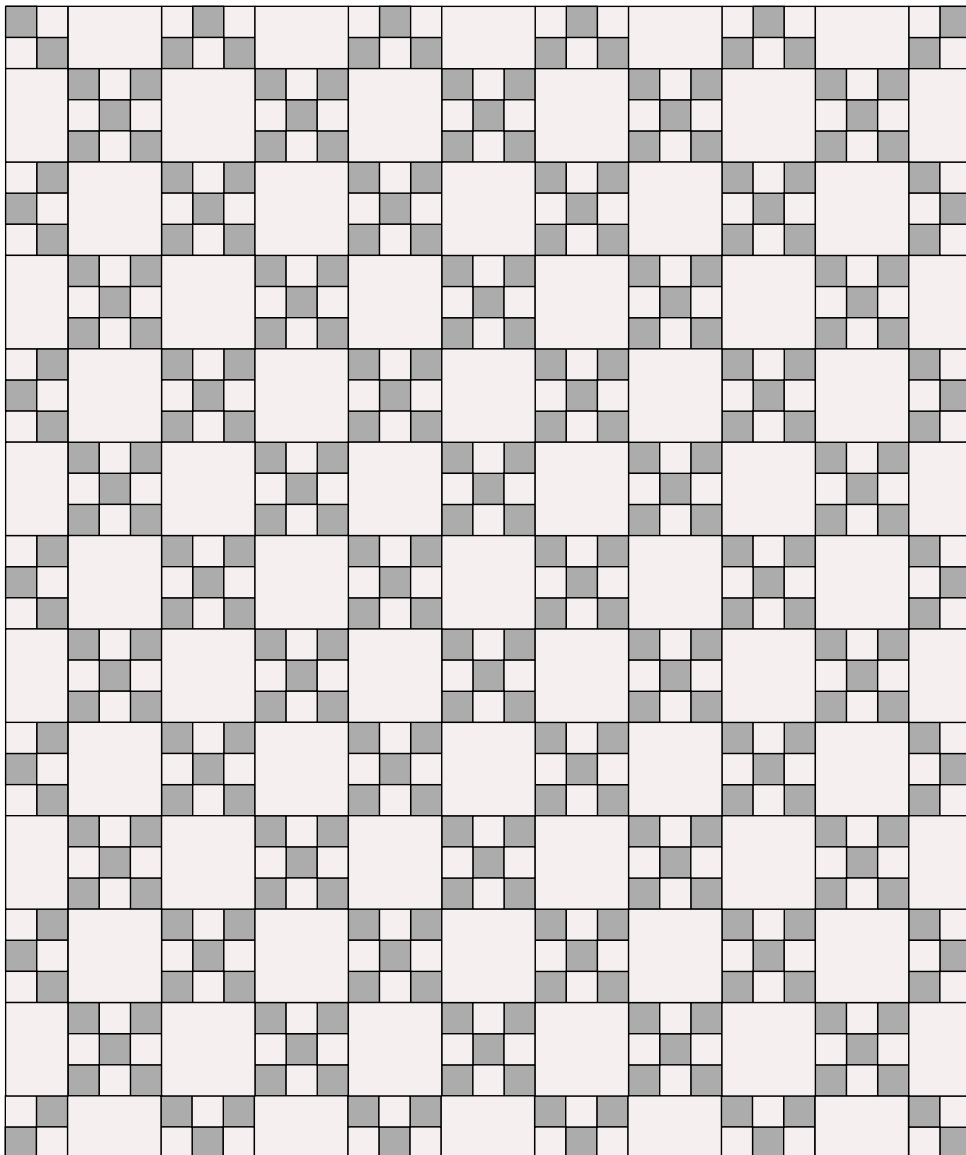
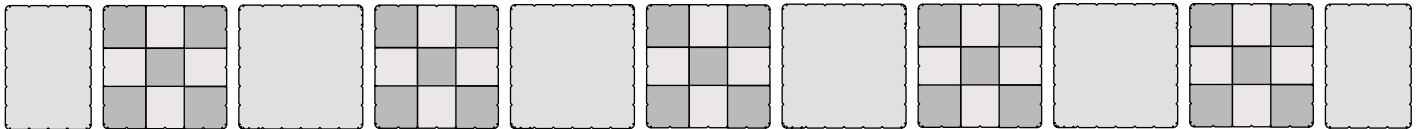
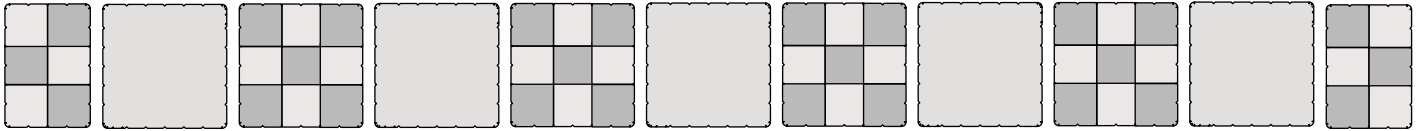


R = Right Side Up, W = Wrong Side Up

# Single Irish Chain

## Final Assembly

Assemble 4SQ units, 6SQ units, 9SQ units, background squares B, and background rectangles in the following arrangement. Sew together into rows and then sew the rows together to complete the quilt top.



# SAMPLE ESTIMATE

## Single Irish Chain

Customer Name: Jane Doe

Email: [JaneDoe@gmail.net](mailto:JaneDoe@gmail.net)

Shape Sizes (finished):

Quilt Name: Jane's Lap Quilt

- First Estimate
- Second Estimate
- Third Estimate
- Final Estimate

SQ A	2 inch	x	2 inch
SQ B	6 Inch	x	6 inch
2SQ A	2 inch	x	4 inch
RECT	4	x	6 inch

### Scale

SQ A Side Length 2 Inches  
 Unit Width 6.00 Inches  
 Unit Length 6.00 Inches

### Dimensions

Nine Patches Across 5 Width 62.0 Inches  
 Nine Patches Down 6 Length 74.0 Inches  
 Border Width 0.0

### Number of units and shapes required for the above dimensions:

Repetitive Units		Shapes	
50	9 Patch	100	2SQ A Color
		100	2SQ A BG
		50	SQ A Color
18	6 Patch	27	2SQ A Color
		27	2SQ A BG
4	4 Patch	4	2SQ A Color
		4	2SQ A BG
		49	SQ B BG
		22	RECT BG

### Cutting Order

### 2 Colors

#		Fabric	Price per Inch	Qty	Shape	Fabric Req	Price
1	Color	HWC	\$0.33	131	2SQ A	53	\$17.49
			\$0.33	50	SQ A	11	\$3.63
2	BG	HWC	\$0.33	131	2SQ A	53	\$17.49
			\$0.33	49	SQ B	63	\$20.79
			\$0.33	22	RECT	23	\$7.59
	Border		\$0.33	Cut off the Bolt		0	\$0.00
	Binding		\$0.33	Cut off the Bolt		0	\$0.00
	Backing			Cut off the Bolt		0	\$0.00

Fabric Cost	\$66.99
Cutting Fee	\$60.90
Diagonal Seam Tape	\$7.50
Shipping	\$5.00
	<hr/> <hr/>
	\$140.39

# SAMPLE ESTIMATE

# Single Irish Chain

## 3 Colors

#	Units	Fabric	Price per Inch	Qty	Shape	Fabric Req	Price
1	Predominant Color	HWC	\$0.33	95	2SQ A	39	\$12.87
			\$0.33	50	SQ A	11	\$3.63
2	Accent Color	HWC	\$0.33	36	2SQ A	17	\$5.61
3	BG	HWC	\$0.33	131	2SQ A	53	\$17.49
			\$0.33	49	SQ B	63	\$20.79
			\$0.33	22	RECT	23	\$7.59
	Border		\$0.33	Cut off the Bolt		0	\$0.00
	Binding		\$0.33	Cut off the Bolt		0	\$0.00
	Backing		\$0.33	Cut off the Bolt		0	\$0.00

Fabric Cost	\$67.98
Cutting Fee	\$61.80
Diagonal Seam Tape	\$7.50
Shipping	\$5.00
	<u>\$142.28</u>

## Scrappy

**16 Fabrics**

#	Units	Fabric	Price per Inch	Qty	Shape	Fabric Req	Total Fabric Req	Price
1	Each Color	HWC	\$0.33	9	2SQ A	6	96	\$31.68
			\$0.33	4	SQ A			
2	BG	HWC	\$0.33	131	2SQ A	53	53	\$17.49
			\$0.33	49	SQ B	63	63	\$20.79
			\$0.33	22	RECT	23	23	\$7.59
	Border		\$0.33	Cut off the Bolt		0	0	\$0.00
	Binding		\$0.33	Cut off the Bolt		0	0	\$0.00
	Backing		\$0.33	Cut off the Bolt		0	0	\$0.00

Fabric Cost	\$77.55
Cutting Fee	\$70.50
Diagonal Seam Tape	\$7.50
Shipping	\$5.00
	<u>\$160.55</u>